

OCEANIA CRUISES®

2010 European Collection



Special Offer

\$2,000 PRICE REDUCTION

PER STATEROOM

off 2 for 1 Cruise Fares with Free Airfare

OFFER EXPIRES AUGUST 31, 2009





Vista Suite

**SUITE AMENITIES
(OS, VS, AND PH SUITES)**

- Exclusive Tranquility BedSM with 700-thread-count linens
- Butler Service
- Private Teak Veranda
- Welcome Bottle of Champagne
- Refrigerated Mini-Bar
- Full Size Bathtubs*
- Priority Early Check-In
- Priority Restaurant Reservations in Toscana and Polo Grill
- Priority Luggage Delivery
- 24-Hour Room Service
- Hermès & Clarins Amenities**
- Therapeutic Bath Salts
- Extra Plush, Oversized Cotton Towels
- Thick Cotton Robes and Slippers
- Cashmere Lap Blankets
- Complimentary Shoulder Bag
- 42" Plasma Televisions with Bose® Surround Sound System**
- Flat-Screen Color Televisions
- DVD Player with Over 300 Titles
- In-Suite Dell™ Laptop Computer**
- Writing Desk & Stationery
- Grohe Handheld Shower Heads
- Security Safe
- Twice-Daily Maid Service
- Internet Access Port
- Alarm Clock
- Handheld Hair Dryer
- Vanity Mirror
- Direct Dial Satellite Phone & Cellular Service
- 110/220 Volt Outlets

BUTLER SERVICE

- Course-By-Course In-Suite Dining
- "Order In" from Any One of Our Four Gourmet Restaurants
- Coordination of Shore-Side Dinner & Entertainment Reservations
- Priority Reservation of Shore Excursions
- Packing & Unpacking Upon Request
- Last Minute Luggage Collection
- Complimentary Garment Pressing†
- Complimentary Shoeshine Service
- Gourmet Evening Canapés
- Special Services upon Request

*Owner's and Vista Suites feature Jacuzzi Tubs

**Owner's and Vista Suites only

†Limitations Apply

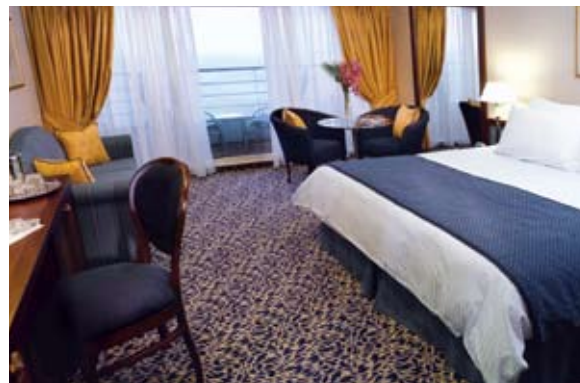
More THAN A STATEROOM
IT'S A *Sanctuary*



Owner's Suite

OS VS OWNER'S SUITE AND VISTA SUITE

Being our most spacious, luxurious accommodations, our six Owner's Suites and four Vista Suites are among the first to be reserved. It's no surprise. Located in the premier corners on decks 6, 7 and 8, these suites range in size from 786 to nearly 1,000 square feet, with every inch designed for your enjoyment. Thoughtful amenities abound, ensuring a memorable voyage. Ease into your own Jacuzzi with a cool drink from the refrigerated mini-bar. Watch first-run Hollywood films on the 42-inch plasma flat-screen television, enhanced by Bose® surround sound, or view them from the comfort of your bed on a second flat-screen television. Access the Internet with the laptop computer that's provided for up-to-the-minute news, to research upcoming ports, and to email friends. Wake up refreshed and rested on the queen-size Tranquility Bed. Draw back the curtains from the two walls with floor-to-ceiling glass doors, walk out on the wraparound teak veranda and take in the stunning panoramic views from the comfort of the resort-quality outdoor lounge furniture. Everything imaginable is here in your suite, even a second bathroom for guests.



Penthouse Suite

PH1 PH2 PH3 PENTHOUSE SUITE

Our collection of elegant Penthouse Suites exclusively occupies deck 8 and rivals a world-class hotel for comfort. The design of each suite is ingenious, which maximizes its 322 square feet of space and puts every creature comfort at your fingertips. At its heart is a spectacularly luxurious queen-size Tranquility Bed that can be converted into two twin beds, if you wish. Commodious enough for private in-suite dining, the living area features a refrigerated mini-bar and vanity desk, and the marble and granite bathroom is large enough for an indulgent, full-size bathtub. For the ultimate view, simply open the sliding glass door and relax on the exquisitely furnished private teak veranda.



POINTS OF DISTINCTION

Finest cuisine at sea, served in four distinctive open-seating restaurants

Gourmet culinary program created by world-renowned Master Chef, Jacques Pépin

Elegant mid-size ships featuring large-ship amenities

The world's most alluring and desirable ports

Country club-casual ambiance; tuxedos and gowns are never required

70% of suites and staterooms feature private teak verandas

Butler Service offered in Owner's, Vista and Penthouse Suites

Exclusive Tranquility BedsSM, featuring plush duvets, goose-down pillows and the finest Egyptian cotton linens

Best value in luxury cruising

OCEANIA CRUISES[®]
Your World. Your Way.[®]



ANNOUNCING *Europe* 2010

30 NEW PORTS OF CALL

24 NEW ITINERARIES

1 EXTRAORDINARY OFFER



\$2,000 PRICE REDUCTION

PER STATEROOM*

off 2 for 1 Cruise Fares with Free Airfare

3rd and 4th Guests 50% Off • Single Supplement 50%

Offer Expires August 31, 2009

Ibiza, Spain

New FOR EUROPE 2010

Unlimited complimentary soft drinks and bottled water
Government Fees and Taxes now included in cruise fares

30 intriguing new ports of call

Alanya, Turkey	Kas, Turkey	Portovenere (Cinque Terre), Italy
Alicante, Spain	Korcula, Croatia	Ronne (Bornholm), Denmark
Antwerp, Belgium	La Rochelle, France	Rotterdam, Netherlands
Brest, France	Longyearbyen (Spitsbergen), Norway	Sanary-sur-Mer, France
Cannes, France	Lorient, France	Sinop, Turkey
Gothenburg, Sweden	Murmansk, Russia	Stavanger, Norway
Hvar, Croatia	Nauplion, Greece	Tartous, Syria
Ibiza, Spain	Paris (Rouen), France	Toulon, France
Isafjordur, Iceland	Patmos, Greece	Trabzon, Turkey
Itea, Greece	Portland (Dorset), UK	Zakinthos, Greece



2010 SAIL DATE	NOTE	SHIP	DAYS	FARE TYPE	EMBARK AND DISEMBARK	PORTS OF CALL	AT SEA DAYS
APR 4		REGATTA	10	A	BARCELONA TO ROME Pearls of the Riviera	Valencia, Palma De Mallorca, Provence (Marseille), Saint-Tropez, Monte Carlo, Portofino, Florence/Pisa (Livorno), Amalfi/Positano, Sorrento/Capri	0
APR 14	NEW	REGATTA	14	G	ROME TO VENICE* Italian Crossroads	La Spezia (Cinque Terre), Portofino, Monte Carlo, Cannes , Florence/Pisa (Livorno), Amalfi/Positano, Sorrento/Capri, Taormina (Sicily), Corfu, Kotor, Split, Koper	0
APR 18	NEW	INSIGNIA	36	L	BARCELONA TO MONTE CARLO Grand Circle of the Mediterranean	Palma De Mallorca, Provence (Marseille), Florence/Pisa (Livorno), Rome (Civitavecchia), Sorrento/Capri, Taormina (Sicily), Umbria (Ancona), Venice*, Dubrovnik, Corfu, Zakynthos , Athens (Piraeus), Alexandria, Cairo (Port Said), Jerusalem (Ashdod)*, Haifa, Limassol, Antalya, Rhodes, Patmos , Pergamum (Dikili), Istanbul, Mitiilini (Lesbos), Kusadasi, Santorini, Valletta, La Goulette, Olbia/Porto Cervo (Sardinia), La Spezia (Cinque Terre), Saint-Tropez	3
APR 28		REGATTA	14	G	VENICE* TO BARCELONA Mediterranean Tapestry	Dubrovnik, Corfu, Taormina (Sicily), Sorrento/Capri, Amalfi/Positano, Rome (Civitavecchia), La Spezia (Cinque Terre), Florence/Pisa (Livorno), Portofino, Monte Carlo, Provence (Marseille), Palma De Mallorca	0
MAY 19	NEW	REGATTA	14	G	BARCELONA TO DOVER Vineyards and Vistas	Valencia, Gibraltar, Seville (Cádiz), Lisbon, Oporto, La Coruña, Bilbao, Bordeaux*, Lorient , St. Peter Port (Guernsey), Paris (Rouen)*	0
MAY 14		NAUTICA	10	C	ATHENS TO BARCELONA Historic Reflections	Kusadasi, Santorini, Zakynthos , Messina (Sicily), Amalfi/Positano, Rome (Civitavecchia), Florence/Pisa (Livorno), Monte Carlo, Provence (Marseille)	0
MAY 24	NEW	INSIGNIA	12	D	MONTE CARLO TO VENICE* Sun-Splashed Rivas	Cannes , La Spezia (Cinque Terre), Florence/Pisa (Livorno), Rome (Civitavecchia), Sorrento/Capri, Taormina (Sicily), Corfu, Kotor, Dubrovnik*, Koper	0
JUN 2		REGATTA	14	H	DOVER TO STOCKHOLM* Scandinavian Splendors	Bruges (Zeebrugge), Amsterdam, Kiel Canal Transit, Berlin (Warnemunde), Copenhagen, Visby, Riga, Tallinn, St. Petersburg**, Helsinki	1
JUN 4		NAUTICA	14	H	BARCELONA TO ISTANBUL* Roman Revelations	Valletta, Aghios Nikolaos (Crete), Alexandria, Cairo (Port Said), Jerusalem (Ashdod), Haifa*, Limassol, Kas , Kusadasi	2
JUN 5		INSIGNIA	12	D	VENICE* TO ROME Ionian Inspiration	Dubrovnik*, Kotor, Corfu, Taormina (Sicily), Sorrento/Capri, Amalfi/Positano, Florence/Pisa (Livorno), Monte Carlo, La Spezia (Cinque Terre), Portofino	0
JUN 16		REGATTA	14	H	STOCKHOLM* TO DOVER Scandinavian Splendors	Helsinki, St. Petersburg**, Tallinn, Riga, Visby, Copenhagen, Berlin (Warnemunde), Kiel Canal Transit, Amsterdam, Bruges (Zeebrugge)	1
JUN 17	NEW	INSIGNIA	10	C	ROME TO BARCELONA Yacht Havens	Bonifacio (Corsica), Portovenere (Cinque Terre), Toulon , Cannes , Portofino, Olbia/Porto Cervo (Sardinia), Saint-Tropez, Sanary-sur-Mer , Sète	0
JUN 18		NAUTICA	12	D	ISTANBUL* TO ATHENS Black Sea Serenade	Nessebur, Constanta, Odessa, Sevastopol, Sinop , Trabzon , Sochi, Yalta, Kusadasi	1
JUN 27	NEW	INSIGNIA	14	H	BARCELONA TO AMSTERDAM Connoisseur's Quest	Valencia, Gibraltar, Seville (Cádiz), Lisbon, Bilbao, Biarritz (Saint-Jean-de-Luz), Bordeaux*, Lorient , Saint-Malo, Paris (Honfleur), Bruges (Zeebrugge)	1
JUN 30		NAUTICA	10	C	ATHENS TO BARCELONA Historic Reflections	Kusadasi, Santorini, Zakynthos , Messina (Sicily), Amalfi/Positano, Rome (Civitavecchia), Florence/Pisa (Livorno), Monte Carlo, Provence (Marseille)	0
JUN 30		REGATTA	12	E	DOVER TO DOVER Vikings, Castles and Kings	Edinburgh (Leith), Invergordon, Lerwick (Shetland Islands), Ålesund, Geiranger (Nordfjord), Hellesylt, Belfast, Dublin, Waterford, Fowey	2
JUL 10	NEW	NAUTICA	14	I	BARCELONA TO VENICE* Classical Delights	Palma De Mallorca, Provence (Marseille), Monte Carlo, Portofino, Florence/Pisa (Livorno), La Spezia (Cinque Terre), Rome (Civitavecchia), Sorrento/Capri, Amalfi/Positano, Taormina (Sicily), Corfu, Korcula	0
JUL 11	NEW	INSIGNIA	12	E	AMSTERDAM TO DOVER Windmills and Wonders	Bruges (Zeebrugge), Rotterdam , Kiel Canal Transit, Copenhagen, Gothenburg , Oslo, Antwerp , Paris (Le Havre), Saint-Malo, Portland (Dorset)	2
JUL 12		REGATTA	14	I	DOVER TO STOCKHOLM* Scandinavian Splendors	Bruges (Zeebrugge), Amsterdam, Kiel Canal Transit, Berlin (Warnemunde), Copenhagen, Visby, Riga, Tallinn, St. Petersburg**, Helsinki	1
JUL 23	NEW	INSIGNIA	18	K	DOVER TO COPENHAGEN Lands of the Midnight Sun	Oslo, Stavanger , Hellesylt, Geiranger (Nordfjord), North Cape (Honningsvåg)*, Murmansk , Hammerfest, Cruise the Polar Ice Barrier, Longyearbyen (Spitsbergen) , Harstad, Bergen, Kristiansand	6
JUL 24		NAUTICA	12	E	VENICE* TO ROME Ionian Inspiration	Dubrovnik*, Kotor, Corfu, Taormina (Sicily), Sorrento/Capri, Amalfi/Positano, Florence/Pisa (Livorno), Monte Carlo, La Spezia (Cinque Terre), Portofino	0
JUL 26	NEW	REGATTA	10	C	STOCKHOLM TO COPENHAGEN Baltic Treasures	Helsinki, St. Petersburg*, Tallinn, Riga, Visby, Gdansk, Ronne (Bornholm), Berlin (Warnemunde)	0
AUG 5	NEW	NAUTICA	10	C	ROME TO BARCELONA Yacht Havens	Bonifacio (Corsica), Portovenere (Cinque Terre), Toulon , Cannes , Portofino, Olbia/Porto Cervo (Sardinia), Saint-Tropez, Sanary-sur-Mer , Sète	0
AUG 5	NEW	REGATTA	14	I	COPENHAGEN TO TILBURY Route of the Vikings	Kristiansand, Bergen, Flåm (Sognefjorden), Gudvangen (Sognefjorden), Lerwick (Shetland Islands), Tórshavn (Faroe Islands), Isafjordur , Reykjavik, Stornoway (Hebrides), Belfast, Dublin	3
AUG 10	NEW	INSIGNIA	14	I	COPENHAGEN TO LISBON European Legends	Oslo, Amsterdam, Bruges (Zeebrugge), Paris (Le Havre), Brest , La Rochelle , Bordeaux*, Biarritz (Saint-Jean-de-Luz), Bilbao, La Coruña, Oporto	1
AUG 15	NEW	NAUTICA	14	I	BARCELONA TO ISTANBUL Radiant Reflections	Provence (Marseille), Monte Carlo, La Spezia (Cinque Terre), Florence/Pisa (Livorno), Bonifacio (Corsica), Rome (Civitavecchia), Amalfi/Positano, Taormina (Sicily), Santorini, Rhodes, Kusadasi, Mitiilini (Lesbos)	1

REEK ISLES AND EASTERN MEDITERRANEAN • TRANSOCEANIC VOYAGES

2010 SAIL DATE	NOTE	SHIP	DAYS	FARE TYPE	EMBARK AND DISEMBARK	PORTS OF CALL	AT SEA DAYS
AUG 19		REGATTA	14	I	TILBURY TO STOCKHOLM* Scandinavian Splendors	Bruges (Zeebrugge), Amsterdam, Kiel Canal Transit, Berlin (Warnemunde), Copenhagen, Visby, Riga, Tallinn, St. Petersburg**, Helsinki	1
AUG 24	NEW	INSIGNIA	12	E	LISBON TO ROME Majestic Mosaic	Tangier (Morocco), Seville (Cádiz), Málaga, Alicante, Ibiza , Barcelona, Saint-Tropez, Cannes , Monte Carlo, Portofino, Florence/Pisa (Livorno)	0
AUG 29		NAUTICA	12	E	ISTANBUL* TO ATHENS Black Sea Serenade	Nessebur, Constanta, Odessa, Sevastopol, Sinop, Trabzon , Sochi, Yalta, Kusadasi	1
SEP 2		REGATTA	14	I	STOCKHOLM* TO DOVER Scandinavian Splendors	Helsinki, St. Petersburg**, Tallinn, Riga, Visby, Copenhagen, Berlin (Warnemunde), Kiel Canal Transit, Amsterdam, Bruges (Zeebrugge)	1
SEP 5		INSIGNIA	12	E	ROME TO VENICE* Ionian Inspiration	Portofino, La Spezia (Cinque Terre), Monte Carlo, Florence/Pisa (Livorno), Amalfi/Positano, Sorrento/Capri, Taormina (Sicily), Corfu, Kotor, Dubrovnik*	0
SEP 10	NEW	NAUTICA	12	E	ATHENS TO ISTANBUL Greek Isles Odyssey	Nauplion, Zakynthos , Corfu, Katakolon, Monemvasia, Aghios Nikolaos (Crete), Rhodes, Santorini, Delos, Mykonos, Kusadasi	1
SEP 16	 NEW	REGATTA	14	I	DOVER TO MONTE CARLO Artistic Sojourn	Paris (Honfleur), Saint-Malo, Lorient, La Rochelle , Bordeaux*, Bilbao, La Coruña, Oporto, Lisbon, Seville (Cádiz), Port-Vendres	1
SEP 17		INSIGNIA	14	I	VENICE* TO BARCELONA Mediterranean Tapestry	Dubrovnik, Corfu, Taormina (Sicily), Sorrento/Capri, Amalfi/Positano, Rome (Civitavecchia), Florence/Pisa (Livorno), La Spezia (Cinque Terre), Portofino, Monte Carlo, Provence (Marseille), Palma De Mallorca	0
SEP 22	NEW	NAUTICA	12	E	ISTANBUL TO ATHENS Greek Isles Odyssey	Kusadasi, Delos, Mykonos, Santorini, Rhodes, Aghios Nikolaos (Crete), Monemvasia, Katakolon, Corfu, Zakynthos, Nauplion	1
SEP 30	NEW	REGATTA	12	E	MONTE CARLO TO VENICE* Sun-Splashed Riviéras	Cannes , La Spezia (Cinque Terre), Florence/Pisa (Livorno), Rome (Civitavecchia), Sorrento/Capri, Taormina (Sicily), Corfu, Kotor, Dubrovnik*, Koper	0
OCT 1		INSIGNIA	14	G	BARCELONA TO ISTANBUL* Roman Revelations	Valletta, Aghios Nikolaos (Crete), Alexandria, Cairo (Port Said), Jerusalem (Ashdod), Haifa*, Limassol, Kas , Kusadasi	2
OCT 4	NEW	NAUTICA	14	G	ATHENS TO ROME Ancient Legacies	Kusadasi, Kas, Alanya, Tartous , Limassol, Haifa, Jerusalem (Ashdod), Cairo (Port Said), Alexandria, Katakolon, Taormina (Sicily), Sorrento/Capri	1
OCT 12	NEW	REGATTA	12	D	VENICE* TO ATHENS Myths and Legends	Dubrovnik, Kotor, Corfu, Itea, Zakynthos , Monemvasia, Aghios Nikolaos (Crete), Santorini, Kusadasi, Delos, Mykonos	0
OCT 15	NEW	INSIGNIA	14	G	ISTANBUL TO MONTE CARLO* Mythical Splendors	Mykonos, Kusadasi, Santorini, Messina (Sicily), Sorrento/Capri, Amalfi/Positano, Rome (Civitavecchia), Florence/Pisa (Livorno), La Spezia (Cinque Terre), Toulon , Barcelona	1
OCT 18		NAUTICA	12	D	ROME TO VENICE* Ionian Inspiration	Portofino, La Spezia (Cinque Terre), Monte Carlo, Florence/Pisa (Livorno), Amalfi/Positano, Sorrento/Capri, Taormina (Sicily), Corfu, Kotor, Dubrovnik*	0
OCT 24	NEW	REGATTA	10	B	ATHENS TO ROME Ancient Discoveries	Kusadasi, Rhodes, Santorini, Katakolon, Messina (Sicily), Amalfi/Positano, Olbia/Porto Cervo (Sardinia), Ajaccio (Corsica), Florence/Pisa (Livorno)	0
OCT 29	NEW	INSIGNIA	12	D	MONTE CARLO TO VENICE* Mediterranean Grandeur	Cannes , La Spezia (Cinque Terre), Florence/Pisa, Rome (Civitavecchia), Sorrento/Capri, Taormina (Sicily), Corfu, Kotor, Dubrovnik*, Koper	0
OCT 30	NEW	NAUTICA	12	D	VENICE* TO ISTANBUL* Jewels of the Aegean	Koper, Split, Dubrovnik, Corfu, Itea, Zakynthos , Athens (Piraeus), Mykonos, Kusadasi	0
NOV 3	NEW	REGATTA	10	A	ROME TO BARCELONA Roman Interlude	Naples, Olbia/Porto Cervo (Sardinia), La Spezia (Cinque Terre), Florence/Pisa (Livorno), Ajaccio (Corsica), Monte Carlo, Provence (Marseille), Sète, Palma De Mallorca	0
NOV 10	NEW	INSIGNIA	14	G	VENICE* TO BARCELONA Footsteps of History	Hvar , Dubrovnik, Corfu, Messina (Sicily), Naples, Rome (Civitavecchia), La Spezia (Cinque Terre), Florence/Pisa (Livorno), Monte Carlo, Provence (Marseille), Palma De Mallorca, Valencia	0
NOV 13		REGATTA	14	F	BARCELONA TO MIAMI Journey to the New World	Tangier (Morocco), Funchal (Madeira), Hamilton (Bermuda)*	9
DEC 6		INSIGNIA	15	J	BARCELONA TO RIO DE JANEIRO* Southern Sauntering	Gibraltar, Porto Grande (Cape Verde), Recife, Salvador	9

NEW New Itinerary



Oceania Club Reunion Cruise

*Overnight Stay

**Two Overnights

Ports in **bold** are new ports for Oceania Cruises

*Offer expires August 31, 2009. \$2,000 discount is per stateroom based on double occupancy. Indicated discounts for 3rd and 4th guests and single supplement savings are off applicable rates. Fares listed are cruise only in U.S. dollars, per person, based on double occupancy and include Non-Commissionable Fares. Government Fees and Taxes of up to \$8 per guest per day are included in the fares shown. Cruise ship fuel surcharge may apply. All fares and offers are subject to availability, may not be combinable with other offers, are capacity controlled and may be withdrawn at any time without prior notice. 2 for 1 fares are based on published Full Brochure Fares; all fares are cruise only, and do not include Prepaid Charges, Optional Facilities and Services Fees, and personal charges, as defined in the Terms and Conditions of the Guest Ticket Contract which may be viewed at www.OceaniaCruises.com. Full Brochure Fares may not have resulted in actual sales in all cabin categories and may not have been in effect during the last 90 days. Promotional fares may remain in effect after the expiration date. Air promotion applies to economy, round-trip flights only from select Oceania Cruises U.S. & Canadian gateways and does not include ground transfers, air taxes and air fuel surcharges. Air ticketing fee will apply. Free Airfare is available only from the following Oceania Cruises Primary Air Gateways: ATL, BOS, ORD, DFW, DEN, IAH, LAX, MIA, JFK, EWR, MCO, PHL, PHX, SAN, SFO, SEA, TPA, YYZ, YVR, IAD. Airfare is available from all other U.S. & Canadian gateways at an additional charge. Oceania Cruises reserves the right to correct errors or omissions and to change any and all fares, fees, and surcharges at any time. The Cruise Ship Fuel Surcharge is additional revenue to Oceania Cruises. Additional terms and conditions may apply. Complete terms and conditions may be found in the Guest Ticket Contract. Ships' Registry: Marshall Islands.

STATEROOM CATEGORY		FARE TYPE A		FARE TYPE B		FARE TYPE C		FARE TYPE D	
		10 DAYS APRIL, NOVEMBER		10 DAYS OCTOBER		10 DAYS MAY, JUNE, JULY, AUGUST		12 DAYS MAY, JUNE, OCTOBER	
		FULL BROCHURE FARE PER GUEST	SPECIAL OFFER FARE PER GUEST	FULL BROCHURE FARE PER GUEST	SPECIAL OFFER FARE PER GUEST	FULL BROCHURE FARE PER GUEST	SPECIAL OFFER FARE PER GUEST	FULL BROCHURE FARE PER GUEST	SPECIAL OFFER FARE PER GUEST
OS	Owner's Suite	\$19,998	\$8,999	\$19,998	\$8,999	\$19,998	\$8,999	\$21,998	\$9,999
VS	Vista Suite	\$17,998	\$7,999	\$17,998	\$7,999	\$17,998	\$7,999	\$19,998	\$8,999
PH1	Penthouse Suite	\$13,198	\$5,599	\$13,398	\$5,699	\$13,798	\$5,899	\$15,198	\$6,599
PH2	Penthouse Suite	\$12,598	\$5,299	\$12,798	\$5,399	\$13,198	\$5,599	\$14,598	\$6,299
PH3	Penthouse Suite	\$12,198	\$5,099	\$12,398	\$5,199	\$12,798	\$5,399	\$14,198	\$6,099
A1	Concierge Level Veranda Stateroom	\$10,398	\$4,199	\$10,598	\$4,299	\$10,998	\$4,499	\$12,198	\$5,099
A2	Concierge Level Veranda Stateroom	\$9,998	\$3,999	\$10,198	\$4,099	\$10,598	\$4,299	\$11,798	\$4,899
A3	Concierge Level Veranda Stateroom	\$9,798	\$3,899	\$9,998	\$3,999	\$10,398	\$4,199	\$11,598	\$4,799
B1	Veranda Stateroom	\$9,598	\$3,799	\$9,798	\$3,899	\$10,198	\$4,099	\$11,398	\$4,699
B2	Veranda Stateroom	\$9,398	\$3,699	\$9,598	\$3,799	\$9,998	\$3,999	\$11,198	\$4,599
C1	Deluxe Ocean View Stateroom	\$8,598	\$3,299	\$8,798	\$3,399	\$9,198	\$3,599	\$9,998	\$3,999
C2	Deluxe Ocean View Stateroom	\$8,398	\$3,199	\$8,598	\$3,299	\$8,998	\$3,499	\$9,798	\$3,899
D	Ocean View Stateroom	\$7,998	\$2,999	\$8,198	\$3,099	\$8,598	\$3,299	\$9,198	\$3,599
E	Ocean View Stateroom	\$7,798	\$2,899	\$7,998	\$2,999	\$8,398	\$3,199	\$8,998	\$3,499
F	Inside Stateroom	\$7,598	\$2,799	\$7,798	\$2,899	\$8,198	\$3,099	\$8,798	\$3,399
G	Inside Stateroom	\$7,398	\$2,699	\$7,598	\$2,799	\$7,998	\$2,999	\$8,598	\$3,299

Government Fees and Taxes of up to \$8 per guest per day are included in the fares shown above.

STATEROOM CATEGORY		FARE TYPE E		FARE TYPE F		FARE TYPE G		FARE TYPE H	
		12 DAYS JUNE, JULY, AUGUST, SEPTEMBER		14 DAYS NOVEMBER		14 DAYS APRIL, MAY, OCTOBER		14 DAYS JUNE	
		FULL BROCHURE FARE PER GUEST	SPECIAL OFFER FARE PER GUEST	FULL BROCHURE FARE PER GUEST	SPECIAL OFFER FARE PER GUEST	FULL BROCHURE FARE PER GUEST	SPECIAL OFFER FARE PER GUEST	FULL BROCHURE FARE PER GUEST	SPECIAL OFFER FARE PER GUEST
OS	Owner's Suite	\$21,998	\$9,999	\$11,998	\$4,999	\$22,998	\$10,499	\$22,998	\$10,499
VS	Vista Suite	\$19,998	\$8,999	\$10,998	\$4,499	\$20,998	\$9,499	\$20,998	\$9,499
PH1	Penthouse Suite	\$15,598	\$6,799	\$9,398	\$3,699	\$16,398	\$7,199	\$16,798	\$7,399
PH2	Penthouse Suite	\$14,998	\$6,499	\$9,198	\$3,599	\$15,798	\$6,899	\$16,198	\$7,099
PH3	Penthouse Suite	\$14,598	\$6,299	\$8,998	\$3,499	\$15,398	\$6,699	\$15,798	\$6,899
A1	Concierge Level Veranda Stateroom	\$12,598	\$5,299	\$8,198	\$3,099	\$13,398	\$5,699	\$13,798	\$5,899
A2	Concierge Level Veranda Stateroom	\$12,198	\$5,099	\$7,998	\$2,999	\$12,998	\$5,499	\$13,398	\$5,699
A3	Concierge Level Veranda Stateroom	\$11,998	\$4,999	\$7,798	\$2,899	\$12,798	\$5,399	\$13,198	\$5,599
B1	Veranda Stateroom	\$11,798	\$4,899	\$7,598	\$2,799	\$12,598	\$5,299	\$12,998	\$5,499
B2	Veranda Stateroom	\$11,598	\$4,799	\$7,398	\$2,699	\$12,398	\$5,199	\$12,798	\$5,399
C1	Deluxe Ocean View Stateroom	\$10,398	\$4,199	\$6,798	\$2,399	\$11,198	\$4,599	\$11,598	\$4,799
C2	Deluxe Ocean View Stateroom	\$10,198	\$4,099	\$6,598	\$2,299	\$10,998	\$4,499	\$11,398	\$4,699
D	Ocean View Stateroom	\$9,598	\$3,799	\$6,198	\$2,099	\$10,398	\$4,199	\$10,798	\$4,399
E	Ocean View Stateroom	\$9,398	\$3,699	\$5,798	\$1,899	\$10,198	\$4,099	\$10,598	\$4,299
F	Inside Stateroom	\$9,198	\$3,599	\$5,398	\$1,699	\$9,998	\$3,999	\$10,398	\$4,199
G	Inside Stateroom	\$8,998	\$3,499	\$4,998	\$1,499	\$9,598	\$3,799	\$9,998	\$3,999

Government Fees and Taxes of up to \$8 per guest per day are included in the fares shown above.

STATEROOM CATEGORY		FARE TYPE I		FARE TYPE J		FARE TYPE K		FARE TYPE L	
		14 DAYS JULY, AUGUST, SEPTEMBER		15 DAYS DECEMBER		18 DAYS JULY		36 DAYS APRIL	
		FULL BROCHURE FARE PER GUEST	SPECIAL OFFER FARE PER GUEST	FULL BROCHURE FARE PER GUEST	SPECIAL OFFER FARE PER GUEST	FULL BROCHURE FARE PER GUEST	SPECIAL OFFER FARE PER GUEST	FULL BROCHURE FARE PER GUEST	SPECIAL OFFER FARE PER GUEST
OS	Owner's Suite	\$23,998	\$10,999	\$11,998	\$4,999	\$26,998	\$12,499	\$39,998	\$18,999
VS	Vista Suite	\$21,998	\$9,999	\$10,998	\$4,499	\$24,998	\$11,499	\$37,998	\$17,999
PH1	Penthouse Suite	\$17,398	\$7,699	\$9,398	\$3,699	\$20,398	\$9,199	\$32,398	\$15,199
PH2	Penthouse Suite	\$16,798	\$7,399	\$9,198	\$3,599	\$19,798	\$8,899	\$31,598	\$14,799
PH3	Penthouse Suite	\$16,398	\$7,199	\$8,998	\$3,499	\$19,398	\$8,699	\$30,998	\$14,499
A1	Concierge Level Veranda Stateroom	\$14,398	\$6,199	\$8,198	\$3,099	\$16,998	\$7,499	\$27,998	\$12,999
A2	Concierge Level Veranda Stateroom	\$13,998	\$5,999	\$7,998	\$2,999	\$16,598	\$7,299	\$27,198	\$12,599
A3	Concierge Level Veranda Stateroom	\$13,798	\$5,899	\$7,798	\$2,899	\$16,398	\$7,199	\$26,798	\$12,399
B1	Veranda Stateroom	\$13,598	\$5,799	\$7,598	\$2,799	\$16,198	\$7,099	\$26,398	\$12,199
B2	Veranda Stateroom	\$13,398	\$5,699	\$7,398	\$2,699	\$15,998	\$6,999	\$25,998	\$11,999
C1	Deluxe Ocean View Stateroom	\$12,198	\$5,099	\$6,798	\$2,399	\$14,798	\$6,399	\$23,798	\$10,899
C2	Deluxe Ocean View Stateroom	\$11,998	\$4,999	\$6,598	\$2,299	\$14,598	\$6,299	\$23,398	\$10,699
D	Ocean View Stateroom	\$11,398	\$4,699	\$6,198	\$2,099	\$13,998	\$5,999	\$22,398	\$10,199
E	Ocean View Stateroom	\$11,198	\$4,599	\$5,798	\$1,899	\$13,798	\$5,899	\$21,998	\$9,999
F	Inside Stateroom	\$10,998	\$4,499	\$5,398	\$1,699	\$13,398	\$5,699	\$21,398	\$9,699
G	Inside Stateroom	\$10,598	\$4,299	\$4,998	\$1,499	\$12,998	\$5,499	\$20,998	\$9,499

Government Fees and Taxes of up to \$8 per guest per day are included in the fares shown above.



A1 A2 A3 CONCIERGE LEVEL VERANDA STATEROOM

French in origin, the term “conciERGE” evolved from a phrase for the person entrusted with caring for visiting nobility. How appropriate, as guests staying in our ConciERGE Level Veranda Staterooms receive the royal treatment. Located in preferred locations on deck 7, these beautifully decorated 216-square-foot staterooms reflect many of the luxurious amenities found in our Penthouse Suites, including a private teak veranda, flat-screen television, plush seating area and spacious closet. In addition, guests will enjoy all of the amenities featured in our other staterooms, along with premier services such as priority restaurant reservations for Polo Grill and Toscana and early embarkation.

EXCLUSIVE CONCIERGE LEVEL AMENITIES

- Welcome Bottle of Champagne
- Refrigerated Mini-Bar
- DVD Player with over 300 of Hollywood’s Greatest Movies
- Cashmere Lap Blankets, Perfect for Relaxing on your Veranda
- Complimentary Oceania Cruises Shoulder Bag
- French-Milled Amenities

EXCLUSIVE CONCIERGE LEVEL SPECIAL SERVICE PRIVILEGES

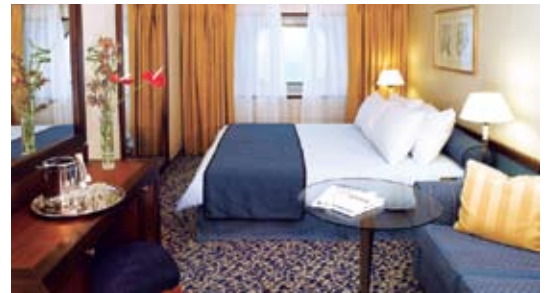
- Priority Early Embarkation and Dedicated Check-in Desk
- Priority Luggage Delivery
- Priority Restaurant Reservations in Toscana & Polo Grill
- Enhanced Room Service Breakfast
- Complimentary Shoeshine Service
- Complimentary Pressing of Garments Upon Embarkation[†]

[†]Limitations Apply.



B1 B2 VERANDA STATEROOM

As the name implies, our deck 6 Veranda Staterooms feature a private teak veranda, our most requested luxury. Besides offering additional space, this wonderful outdoor area is comfortably furnished to enhance the experience of watching the ever-changing panoramas. The conveniences of the 216-square-foot stateroom are just as accommodating and include a vanity desk, breakfast table and choice of a queen-size bed or two twins.



C1 C2 DELUXE OCEAN VIEW STATEROOM

These spacious 165-square-foot staterooms on decks 4, 6 and 7 feel even more commodious with the curtains drawn back, the ocean in full view and natural light streaming in. The rich hues, custom-designed furnishings and stylish fabrics are equally enchanting. Queen or twin bed accommodations, a spacious seating area, vanity desk and breakfast table are among the many conveniences.

STATEROOM AMENITIES

- Exclusive Tranquility BedSM
- Private Teak Veranda*
- 24-Hour Room Service
- Twice-Daily Maid Service
- Plush Cotton Towels
- Thick Cotton Robes & Slippers
- French-Milled Toiletries
- Grohe Handheld Shower Head
- Handheld Hair Dryer
- Full Length Mirror
- Security Safe
- Writing Desk & Stationery
- 20" Flat-Screen Television with DVD & Live Satellite News & Programming
- Direct Dial Satellite Phone & Cellular Service
- Internet Access Port
- 110/220 Volt Outlets

*Categories A1, A2, A3, B1 and B2 only.

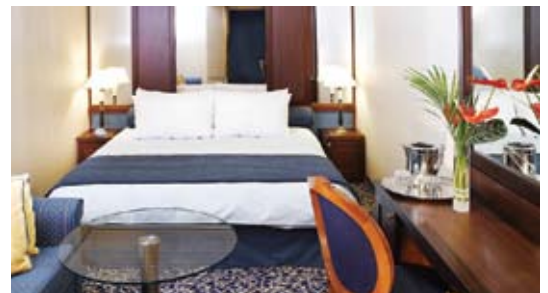


D OCEAN VIEW STATEROOM

These exquisitely appointed 165-square-foot staterooms on deck 3 are tastefully designed to maximize space and convenience. Enjoy queen or twin bed accommodations, a comfortable seating area with a sofa to stretch out on, a vanity desk and breakfast table. A classic porthole affords magnificent seascapes, as it flushes the room with light and reflections of the dancing sea. (Category D pictured above.)

E OCEAN VIEW STATEROOM

Conveniently located amidships on deck 6, these 143-square-foot staterooms are awash in natural sunlight from the expansive window with obstructed views. Serene hues and thoughtful amenities encourage total relaxation. Features include a vanity desk with chair, a small breakfast table, and ample closet. The comfortable queen-size Tranquility Bed converts to two twins as needed.



F G INSIDE STATEROOM

Sanctuaries unto their own, these 160-square-foot staterooms boast a beautiful design and handsome furnishings that add to the serenity. Highlights include a comfortable seating area, vanity desk, plenty of storage, and queen or two twin bed accommodations. It’s an ingenious use of space, complemented by convenient locations on decks 4, 6, 7 and 8.

Please note: Stateroom measurements are approximate, and staterooms in the same category may vary in size. Staterooms may also have different furniture placement than as depicted in the photographs.



THE ULTIMATE SLEEP EXPERIENCE AT SEA

Deck Plans for Regatta, Insignia and Nautica

STATEROOM COLOR LEGEND OS VS PH1 PH2 PH3 A1 A2 A3 B1 B2 C1 C2 D E F G

SYMBOL LEGEND

- ♣ Restrooms
- E Elevator
- OV Obstructed Views
- Quad with Pullman
- ★ ★ Quad with Sofabed
- || Connecting Staterooms
- ▲ Triple with Pullman
- ★ Triple with Sofabed
- ♿ Wheelchair Accessible

SHIPS' SPECIFICATIONS

Year Built: Regatta & Insignia 1998, Nautica 2000
 Year Refurbished: Insignia 2008, Regatta 2009, and Nautica 2010
 Gross Tonnage: 30,277
 Length: 593.7 feet
 Beam: 83.5 feet
 Maximum Draught: 19.5 feet
 Stabilizers: Yes
 Cruising Speed: 18 knots
 Passenger Decks: 9
 Total Decks: 11
 Electric Power or Voltage: 110, 220 AC
 Guest Capacity (Double Occupancy): 684
 Staff Size: 400
 Guest-to-Staff Ratio: 1.71 to 1
 Nationality of Officers: European
 Nationality of Staff: International
 Country of Registry: Marshall Islands

For reservations, contact your travel agent.

OCEANIA CRUISES®
 800-531-5658
 www.OceaniaCruises.com

